

Q300 M MINI

Compact in size, BIG on performance.



Building on the impressive manouverability and proven ride performance of its predessesor, the Salsa M2 Mini, the ORIGINAL ultra-compact powerchair is back - and it's packed-full of more 'big powerchair' performance than ever before!



GO WHERE OTHER POWERCHAIRS CAN'T WITH THE Q300 M MINI.

Still as ultra-slim at JUST 520 mm, the all-new Q300 M Mini is the narrowest TRUE mid-wheel drive powerchair - and with a turning circle of just 1200 mm not only can you go where others can't, you can turn around where they can't too!

The outdoor performance has been taken to the next level too with features like the patented all-wheel suspension - where every wheel is independently cushioned for a safe and comfortable ride. Tackling 4"/100mm kerbs? That's no problem with 14" drive-wheels. Going off-path? The super-strong 4-pole motors will power-through the tricky terrain where others would turn back. And there's no need to race back either, the energy efficiency of the Q300 M Mini squeezes up to 22 miles from 56Ah batteries.

So accessing all areas is a breeze, how about accessorising them too? From adapted shroud designs to accent colours, you're sure to ride in style. We've even upgraded the seating to first-class with the multi-adjustable Sedeo Lite. And with plenty of powered options to choose from, the Q300 M Mini will also cater for your ongoing postural and seating needs.

Got your attention? Okay, let's get started.



COMPACT SPACE? MEET THE ULTRA-SLIM BASE!

ULTRA-NARROW 520 MM WIDTH

Fed up of being told where you can't go? The Q300 M Mini's ultra-compact 520 mm base is so ridiculously narrow, it'll go where other powerchairs can't. Whether it's a complicated living room, a cluttered kitchen or a narrow doorway, the Q300 M Mini fits in to your life, not the other way around.

520 MM WIDTH



ULTRA-COMPACT 1120 MM TURNING CIRCLE

Thanks to its TRUE mid-wheel-drive technology, the Q300 M Mini turns on the spot, for an ultra-small turning circle of 1120 mm. In comparison, RWD and FWD powerchairs need to 'swing' around on its front or rear drive wheels, so the turning circle is wider.



WHAT IS TRUE MID-WHEEL-DRIVE TECHNOLOGY?

It's when the powerchair's drive wheels are aligned central to its length. If positioned more towards the front or rear, the turning circle is wider (and there's more of the powerchair swinging around). There's also less weight on the drive wheel, reducing traction. Whereas the Q300 M Mini provides the most-compact turning circle and increased traction and stability thanks to its TRUE mid-wheel drive design.



SHORT 1060 MM BASE

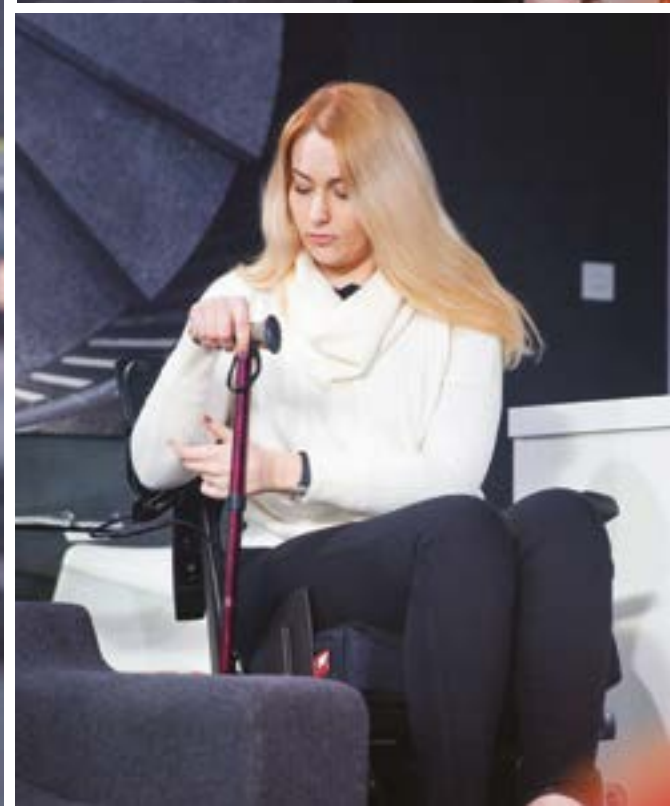
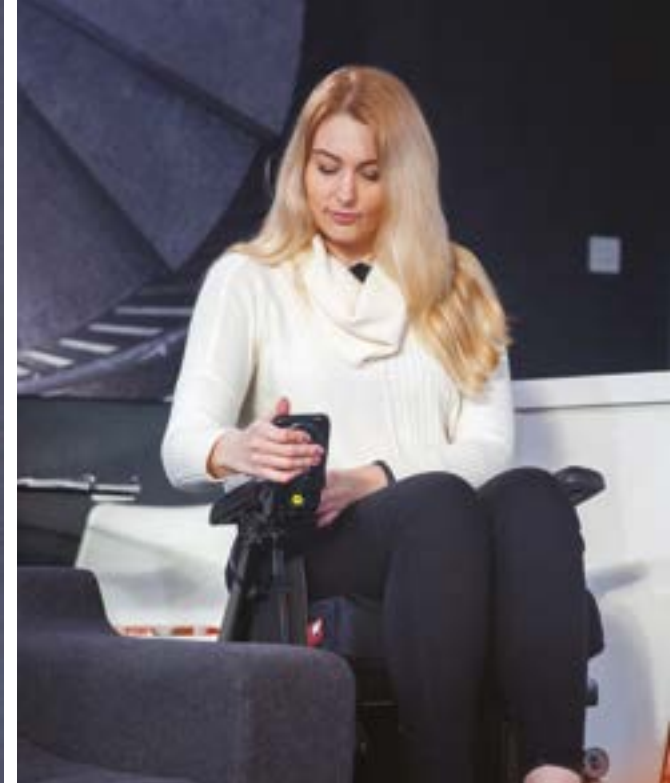
At just 1060 mm in length, the Q300 M Mini will conveniently fit in-and-out of the smallest of lifts and tight spaces such as kitchens with ease. It's also light enough at 103 kg to be usable with most floor lifts too.



GIVES YOU SPACE WHEN
YOU NEED IT.

LOW SEAT HEIGHT FROM 410 MM

Fit comfortably under tables or when driving into your wheelchair adapted vehicle with the Q300 M Mini's ultra-low seat-to-floor height, starting from 16"/410mm (with fixed tilt) and 17"/450mm (with powered lift/tilt).



EASY TRANSFERS WITH FLIP-BACK ARMRESTS

If you struggle with transferring in and out of your powerchair, the armrests on the Q300 M Mini easily flip backwards, giving you additional space. You also have a choice of removable or reclining versions too.



GET TIGHTER TURNS WITH THE CENTRE MOUNT LEGREST

Looking for the tightest turn? The optional centre-mount legrest eliminates the need for traditional legrests at the front of your powerchair. So not only can you make tighter turns without the worry of clipping objects, but you can get closer to tables too. It's also easily adjustable by leg length and angle.



CONTROLLER GETTING IN THE WAY?

For those times when you need to get just that little-bit closer, you can swing the controller sideways (or optionally swing the armrest backwards).

THE OUT-PERFORMER.



TRUE OUTDOOR PERFORMANCE

Experience a true compact powerchair with truly sensational outdoor performance. Narrow enough to be nimble in a crowded city, and with the outdoor presence of a much larger powerchair, it's streets ahead of other compact chairs.

ANTI-PITCH TECHNOLOGY

Traditionally when a powerchair comes to a halt on a slope, the stopping motion of the chair will jolt you forwards. That's a problem we've eliminated with Anti-Pitch technology, so you're kept safe and stable in your seat.

ALL-WHEEL INDEPENDENT SUSPENSION

With QUICKIE's all-wheel independent suspension, all six wheels remain on the ground whilst climbing and transitioning obstacles. As every wheel has its own suspension, any shocks and bumps are absorbed by that wheel's suspension, so you're assured of a soft and smooth ride.



PUSH PERFORMANCE WITH 4-POLE MOTORS

Switch to the new 4-pole motors and you'll get an even punchier response to driving commands, greater ability to tackle troublesome terrains and just an all-round more exciting ride.

THE LEAN, KERB-CLIMBING MACHINE.

Don't you hate it when there's no drop kerb in sight? Thankfully the Q300 M Mini with its 12" drive wheels can handle kerbs of up to 3"/70mm, so there's no need to take the long way round. Looking to handle something a bit trickier? Upgrade to 14" drive wheels and tackle kerbs of up to 4"/100mm.



EASILY NAVIGATE BETWEEN OBSTACLES


The ultra-slim 520 mm base isn't just useful indoors, you can also effortlessly navigate between tightly parked cars or narrow pathways thanks to the Q300 M Mini's ultra-small 520 mm width.

NO NEED TO RUSH BACK WITH 22 MILES RANGE

Powered by punchy 56 Ah batteries, the Q300 M Mini takes you everywhere where you want to go with an impressive range of up to 36 km (22 miles).



HOW DO YOU ROLL?



GREATER TRACTION

Thanks to its TRUE mid-wheel drive technology, the position of your seat is directly over the drive wheel, so the additional weight is increasing traction onto the wheel and decreasing sliding.

12" DRIVE WHEELS

Interested in the most ultra-compact width for the tightest manoeuvrability? The Q300 M Mini comes with 12" drive wheels as standard, providing an ultra-narrow width of 520 mm.

13" DRIVE WHEELS

Prefer the best of both worlds? 13" Drive wheels will keep your Q300 M Mini just as ultra-compact at 540 mm, but will give you the added benefit of increased stability and traction when outdoors.

14" DRIVE WHEELS

If it's just pure outdoor performance that you're after, then its smooth sailing with the optional 14" drive wheels (for an overall width of 570 mm). Providing the best traction and stability, you can also climb obstacles (such as kerbs) of up-to 4"/100mm.

DRIVE BASES

YOUR TRAVELLING COMPANION

Travelling on public transport? The Q300 M Mini's ultra-small width of 520 mm and 1120 mm turning circle will help you negotiate even the busiest of journeys.





PERFECT FOR HOISTING

Weighing at a slim and trim 103 kg, the Q300 M Mini can be easily hoisted in and out of your vehicle. A real space saver, optional extras such as the fold-down backrest, swing-away legrests or single post removable armrests provide an even tighter, compact package for when space is at a premium.

The Q300 M Mini is crash-test approved for use with both Dahl and Q-Straint systems.



RETAIN TRACTION ON RAMPS

Traction can sometimes be lost on ramps as the front castor wheels force the drive wheel off the ground. With the Q300 M Mini, the front castor arms move independently from the base, so the drive wheel will retain its traction.



WHEELCHAIR ADAPTED VEHICLES

Thanks to its ultra-low 16"/410mm seat height, the Q300 M Mini will easily fit under the steering wheel of your vehicle. Ultra-narrow, it won't catch on the tracks or side panels whilst in your vehicle either.



YOUR FIRST-CLASS SEAT TO COMFORT.

SEDEO LITE SEATING SYSTEM

Ride in comfort with the SEDEO LITE seating system. Combining an adjustable and configurable seating frame with the broadest choice of support and positioning options, the SEDEO LITE seating is designed to be individually tailored to your needs. Quick and easy to adjust with just one tool, it's the seating system that's easily adaptable to your changing needs.

INTEGRATED HEADREST DESIGN

The integrated headrest mount is compatible with SEDEO and WHITMYER headrests and was created to address a range of user needs from basic support to multiple-point control.



OPTIONAL COMFORT CUSHIONS

Select from a range of optional comfort cushions, including four cushions and back cushions with adjustable straps and different contours for better comfort and positioning.



TENSION ADJUSTABLE BACKREST

The standard backrest upholstery provides a soft comfort cover with 4 strap tension adjustment to cater for users with a kyphotic posture.



POSITIONING ELEMENTS & INTEGRATED SEAT RAIL

Different positioning elements are available like swing away lateral thoracic supports, thigh supports and knee supports. All of them are easily swing away and detachable. The integrated seat rail offers many options for mounting the different positioning elements.

LENGTH COMPENSATING SWING AWAY LEGRESTS

The swing away length compensating legrest allows you to reach the best position. Also available a wide range of swing away and centre mount legrests both in manual and power elevating versions. From simple version to the SEDEO LITE swing away legrest with many options.



JAY & WHITMYER POSITIONING OPTIONS

Do you have a specific clinical seating requirement? The SEDEO LITE seating system is compatible with a wide range of WHITMYER headrests and JAY cushions and backs are available with the SEDEO LITE seating systems to meet everyone's clinical needs and ensure we offer the best seating possible.

JAY CUSHIONS

Designed for pelvic stability, skin protection and comfort, JAY cushions and backs are low maintenance, highly customizable and are available in a large variety to meet your needs.

WHITMYER HEADRESTS

Created to address a range of user needs from basic support to multiple-point control. WHITMYER headrests come in a variety of pad shapes and sizes for superior head positioning and comfort.



ACCESSORISE ALL AREAS.



STYLE YOUR RIDE

The Q300 M Mini is packed with over 97 combined colour options - including exciting new pattern shroud designs! You can even colour co-ordinate or contrast your choice with an additional 4 wheel and castor arm accent colours too. So what's your favourite mix?

ACCENT COLOURS



Green



Orange



Blue



Red



Silver



White



Black

ADAPTED SHROUD
DESIGNS:




SHROUD COLOURS:



LOOKING FOR A TRULY UNIQUE SHROUD DESIGN?

Our Built-4-Me team can help you achieve your own unique personalized shroud design exactly to your needs and much more! For more information, please visit www.sunrisemedical.co.uk/built4me



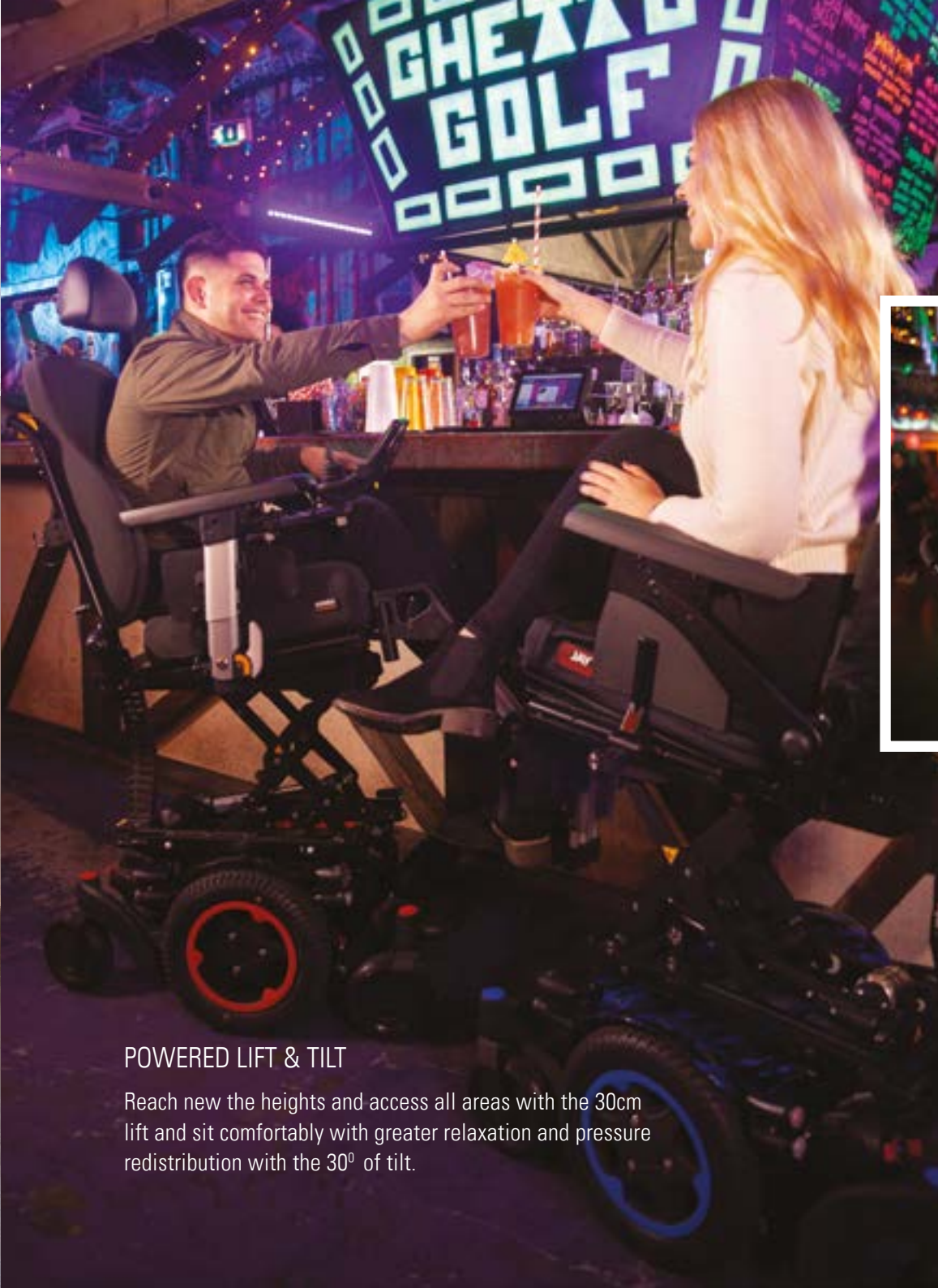
POWER-UP YOUR Q300 M MINI.

POWERED OPTIONS

The Q300 M Mini doesn't just have big-powerchair performance, it has the big-powerchair features too! Whether its powered tilt, lift, recline or elevating legrests, the Q300 M Mini is loaded with the options to meet you clinical and lifestyle needs.

TILT-IN-SPACE

The narrowest QUICKIE mid-wheel drive available with the ability to have 30° tilt to help pressure relieve and to sit more comfortably



POWERED LIFT & TILT

Reach new heights and access all areas with the 30cm lift and sit comfortably with greater relaxation and pressure redistribution with the 30° of tilt.



POWERED RECLINE BACK

A powered recline back ideal for when you want to adjust your position independently to relax.

POWERED ELEVATING LEGRESTS

Select from a range of legrests from 70 or 80 degree; enjoy either manual or powered elevating legrest.

R-NET ADVANCED JOYSTICK

CONTROL SYSTEM

Every Q300 M Mini comes with the reliable and intuitive VR2 control system - but to really ramp up the on-board technology, select the R-Net advanced joystick. With its large, easy-to-read HD display and simple to control paddle switches, it'll keep you connected not only to your chair, but the world around you too.

INFRARED TECHNOLOGY

Seamlessly take control of your environment using the integrated Infrared functionality. Control your home entertainment system, TVs, phone, docking stations and other home entertainment systems any any other Bluetooth and i-devices simply through your joystick.

ASSIGNABLE BUTTONS

Change the function on any button on your joystick to any command you desire, thanks to QUICKIE's patented assignable buttons. You can also assign a second (long press) function to buttons, giving you quicker, simpler and smoother access to functions you commonly use without having to use your joystick.



SWITCH-IT ALTERNATIVE CONTROLS

If driving with a traditional joystick is not the best option, alternative drive controls allow you to fully experience your chair's driving capabilities and benefits.



LINK-IT CONTROL MOUNTING SYSTEM

Easily attach special controls to your Q300 M Mini with Link-It. The modules and rods easily link together to connect your control to your chair. Easy to position, minimalistic and simple to use, the next time you need to mount a special control, just link it!



A woman with long blonde hair, wearing a grey knit beanie and a yellow and white striped coat, is seated in a motorized wheelchair. She is smiling and looking towards a man. The man, wearing a dark green jacket and a black scarf, is also seated in a motorized wheelchair and is smiling back at her. They are on a city street at night, with blurred lights and buildings in the background. The woman's wheelchair has blue accents on the wheels and a small light on the front. The man's wheelchair also has a small light on the front. The overall scene is warm and inviting, highlighting the mobility and social interaction provided by the wheelchairs.

DETAILS THAT SHINE.

LIGHTS AND INDICATORS

Choose lights and indicators and take advantage to help you navigate during the evening.

Now you've seen all of the Q300 M Mini's features, why not try it for yourself? Arrange a FREE demonstration today.

TECHNICAL DATA

Q300 M MINI			
Max. user weight:	136 kg	Turning Circle:	
Seat width:	385 - 510 mm	Max. safe slope:	6 Degrees
Seat depth:	410 - 560 mm (16 - 22")	Max. kerb climbing:	70 mm (with 12" drive wheels), 100 mm (with 14" drive wheels)
Seat height:	410 - 490 mm (16 - 19")	Wheel options:	12", 13" or 14" Drive wheels
Backrest height:	460 - 510 mm (18 - 20")	Colour choices:	7 Accent choices, 4 shroud colours and 10 adapted shroud designs
Backrest angle:	86, 90, 94, 98, 102, 106 Degrees	Max. range (ISO 7176-4)	36 km (22 miles)
Total width:	520 mm (20") - 570 mm (22")	Wheelchair weight:	From 103 kg (including 41 Ah batteries)
Total length:	1060 mm (41.5") - 1180 mm (46.5")	Crash tested:	Yes - approved for forward facing transport in a vehicle (ISO 7176-19). Attachment: 4 chair fixing points with 2 double straps rear & 2 single straps front. No anchored belt restraints allowed. The ease of access and manoeuvrability in vehicles depends on the wheelchair size.
Seat tilt:	0 - 12 Degrees	Transport without user:	Fix the wheelchair safe in the vehicle (e.g. car or plane)
Turning diameter:	1120 mm (44")	Intended use and environment:	For people with limited mobility, indoor and outdoor use. Wheelchair type class B
Max. speed:	6 kph / 10 kph		
Battery size:	41 Ah / 56 Ah		
Electronics:	VR2 / R-Net		



Sunrise Medical

Thorns Road, Brierley Hill, West Midlands
DY5 2LD

Tel.: +44 (0) 845 605 66 88

Fax: +44 (0) 845 605 66 89

E-Mail: enquires@sunmed.co.uk

www.SunriseMedical.co.uk

For further information on the full specification, options and accessories, please refer to the order form. All information is subject to change without notification. Please consult Sunrise Medical with any queries you may have.

If you are visually impaired, this document can be viewed in PDF format at www.SunriseMedical.co.uk